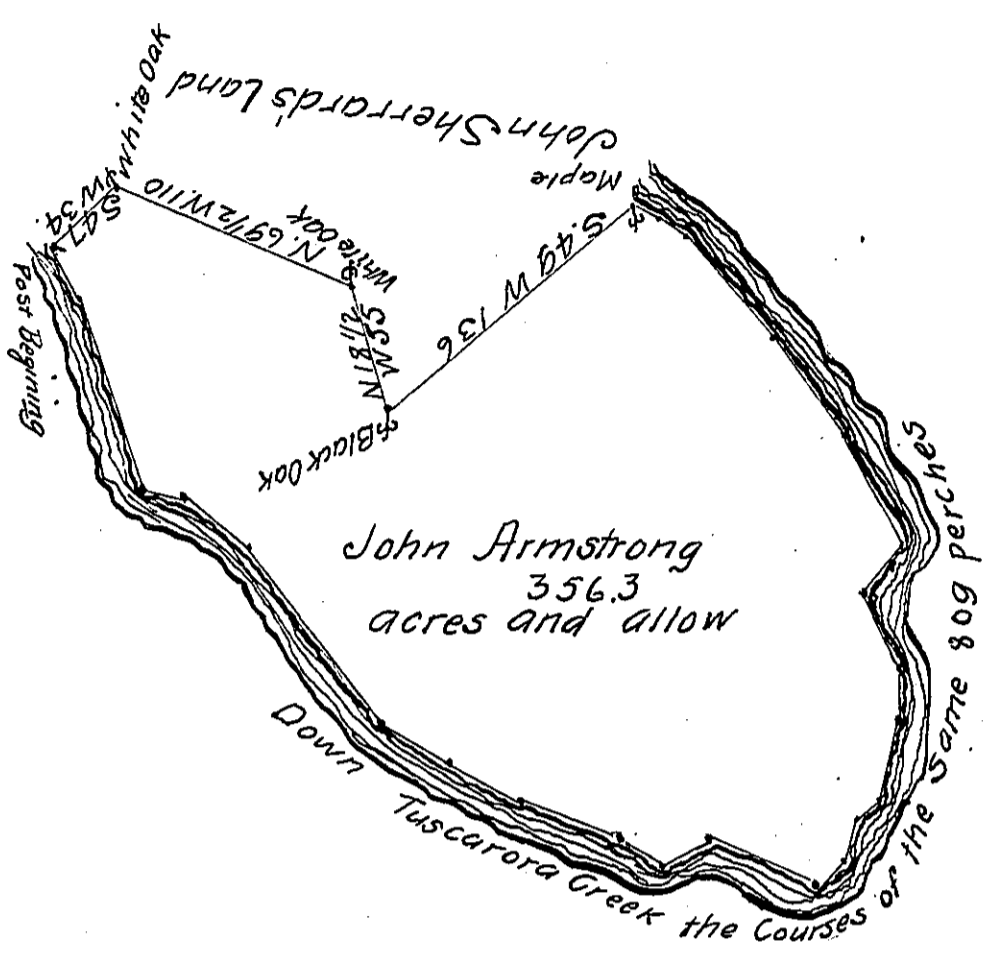


FORM NO. 1.

Courses and Distances  
Down Tuscarora Creek

- S. 29 E. 23
- S. 18 E. 87
- S. 82 E. 23
- S. 54 E. 33
- S. 38 E. 91
- S. 63 E. 34.
- S. 67 E. 34.
- S. 71 E. 44.
- S. 61 E. 20
- N. 59 E. 22
- S. 66 E. 50
- N. 53 E. 13
- N. 21 E. 25
- N. 62 E. 10
- N. 12 E. 36
- N. 2 W. 19
- N. 28 W. 35
- N. 40 E. 26
- N. 29 W. 52
- N. 37 W. 50
- N. 44 W. 58
- N. 58 W. 12
- N. 60 W. 12

809



The Draught of a Tract of Land called Presque Isle situate on Tuscarora Creek Cumberland County containing Three hundred fifty six acres 57 perches with the usual allowance of six acres & cent for Roads formerly surveyd in pursuance of a warrant to John Armstrong dated at Philad<sup>a</sup>. the 3<sup>d</sup> of February Anno Dom 1755 and resurveyd agreable to the old lines on the 10<sup>th</sup> day of May Anno Dom 1768

W<sup>m</sup> Maclay D.S.

To John Lukens Esq S.G.  
of Pennsylvania }

IN TESTIMONY that the above is a copy of the original remaining on file in the Department of Internal Affairs of Pennsylvania, made conformably to an Act of Assembly approved the 16th day of February, 1833, I have hereunto set my Hand and caused the Seal of said Department to be affixed at Harrisburg, this thirty first day of May 1911

*Nevins Howell*  
Secretary of Internal Affairs.